

Educational Master Plan

Internal Environmental Scan
February 25, 2016



EMP Overview

- Message from President
- Introduction
- College History & Overview
- Mission, Vision, Values
- Environmental Scan
 - External
 - Internal
- Plan Assumptions & Goals
- Opportunities for the Future
- Projections for the Future Program of Instruction



Overarching Themes

- *How has the College responded to its external environment?*
- *How has the College implemented its mission?*



Internal Scan

- Institution from Within (Trends)
- Programs Offered
- Current Program of Instruction, Fall 2014
- Scheduling Patterns, Fall 2014
- Students Who Attend the College (Trends)
 - Goals, Gender, Age Ranges, Ethnicity, Unit Load, Time of Attendance
 - Placement Data

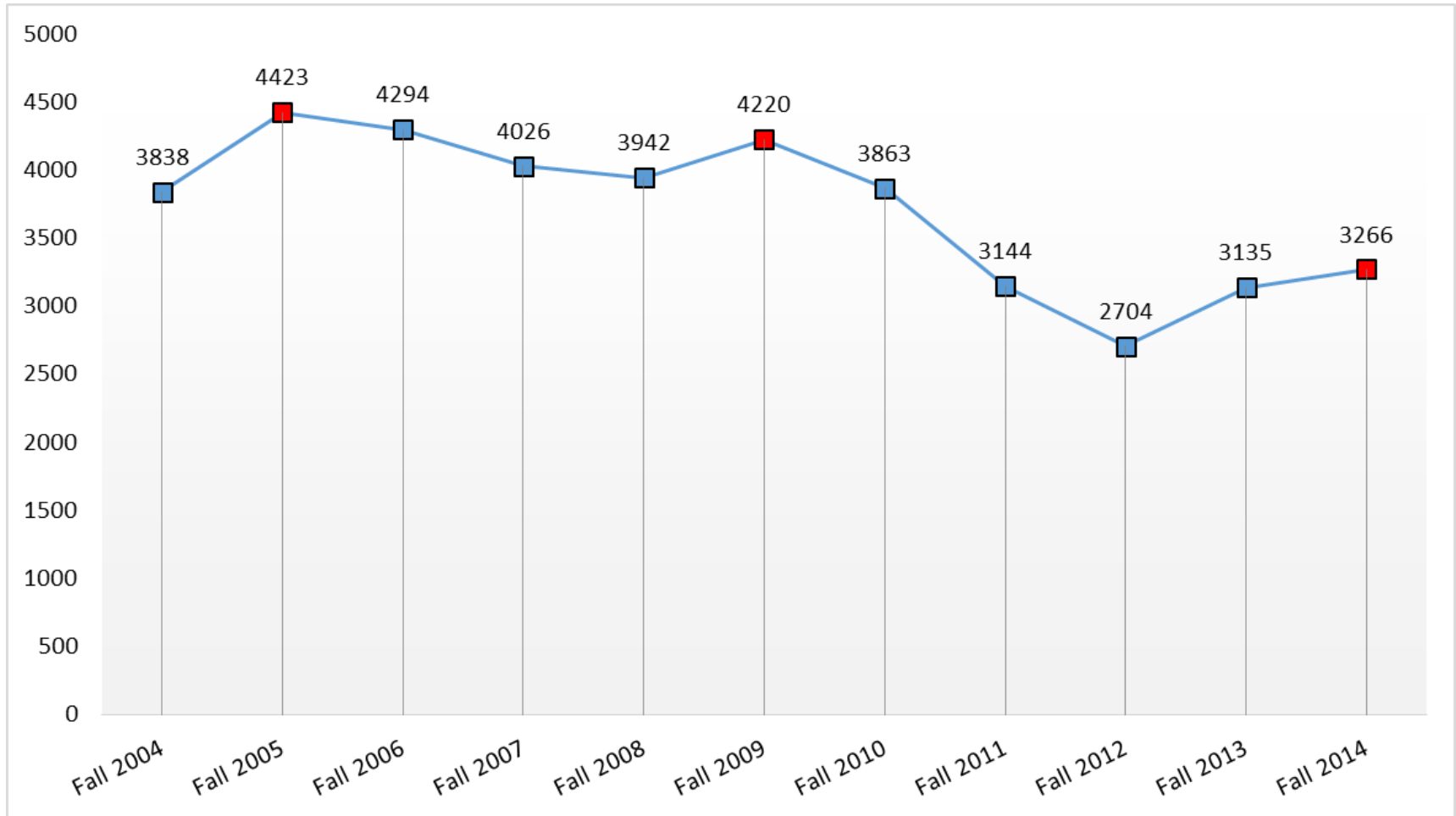


Internal Scan (continued)

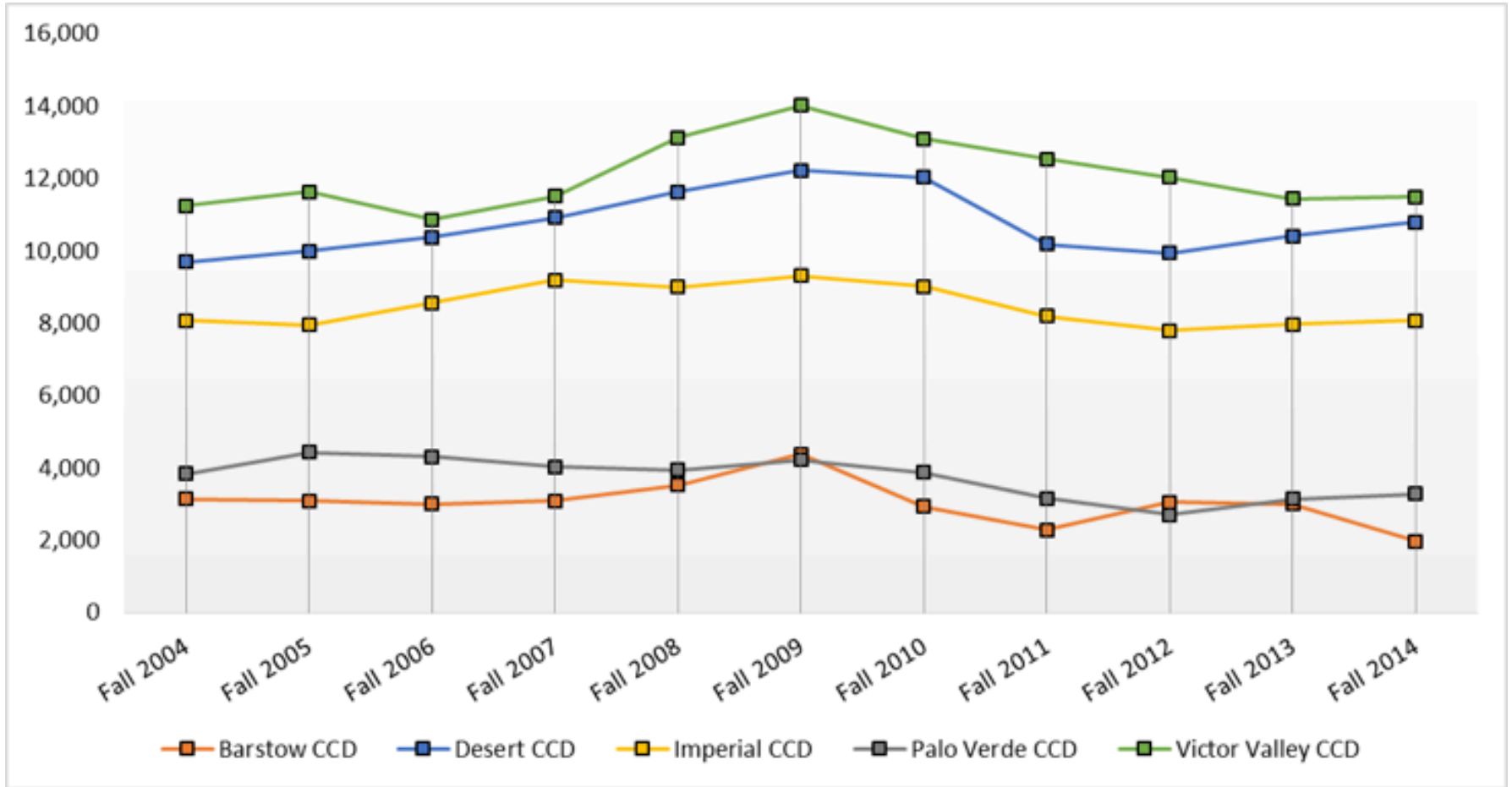
- Instructional Support Resources & Distinctive Academic Programs
- Non-instructional Resources that Support
 - Student Support Services
 - Library & Learning Resources
 - College Staffing
 - Budget
 - Technology
 - Space



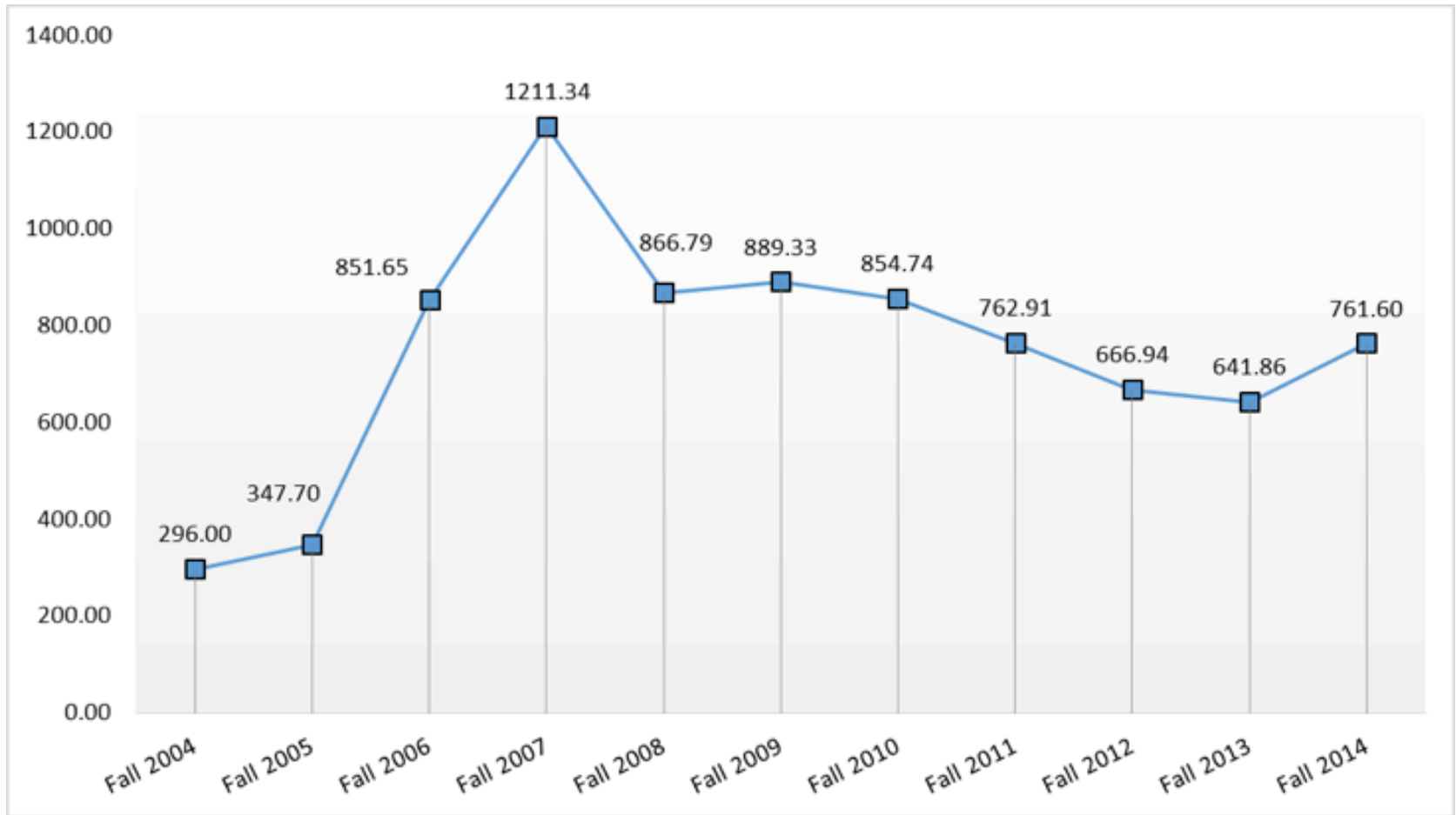
PVC Headcount, Fall Terms



Neighborhood Headcount Trends



PVC FTES Trends, Fall Terms



Source: Data Mart



PVC Programs Authorized

Category	Degrees	Certificates	Local Certificates	Totals
Program Fields of Study	17	8	23	48
Career & Technical Education	11	8	23	42
Liberal Arts	6			6

Note: Some fields of study are double counted as they offer a degree and a State certificate of achievement

See Appendix D: Program Inventory and Awards 2010-11 to 2014-15



Most Commonly Required* Courses in 5 AD-Ts

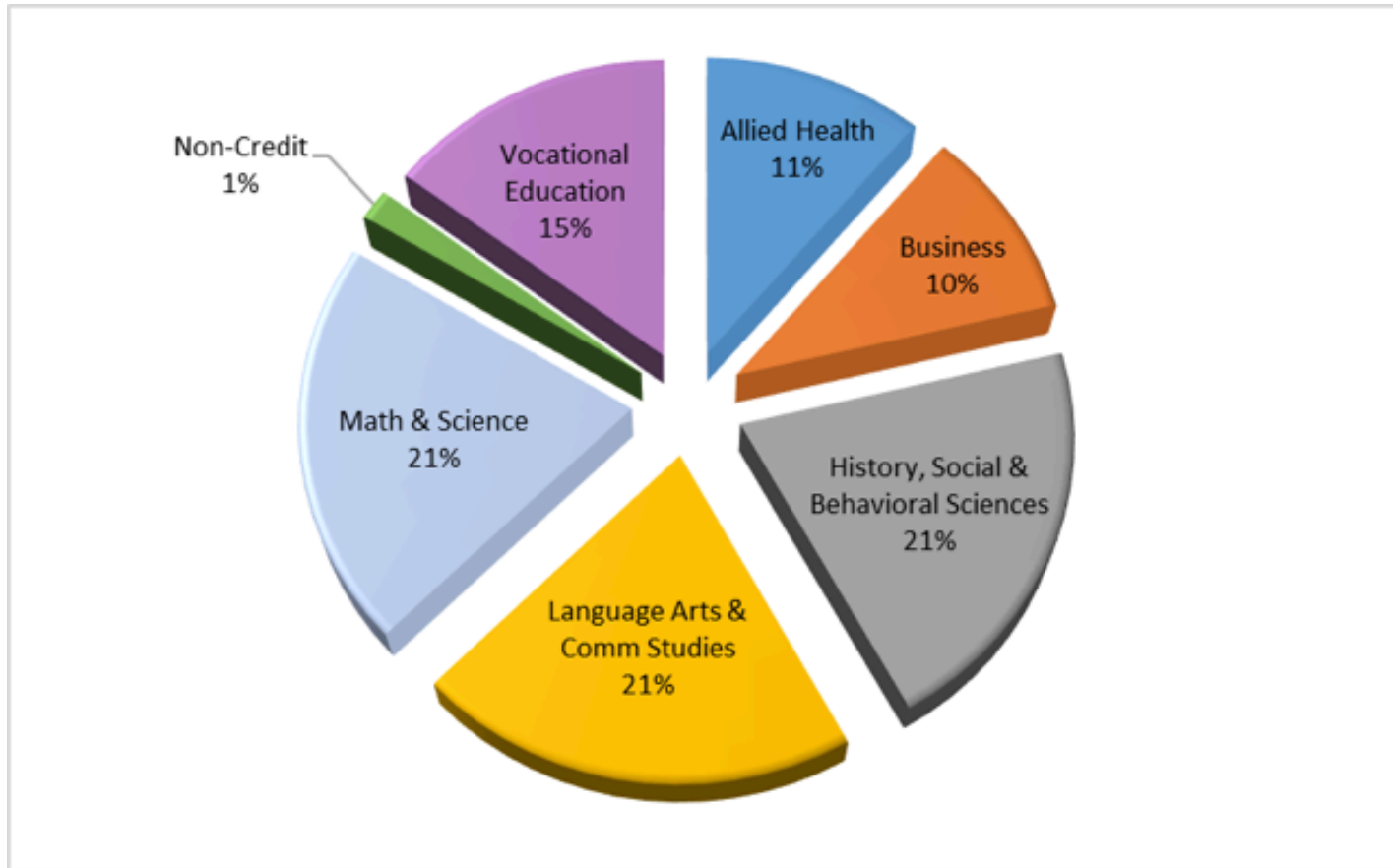
Course	Description	Total Programs
MAT 106	Statistics With Lab	4
PSY 155	Statistical Analysis for the Social Sciences	3
SOC 101	Sociology	3
CHD 102	Child, Family & the Community	3
PSY 101	General Psychology	2
PSY 150	Research Methods	2
CHD 101	Child Growth & Development	2

*required as core or in a list of restricted electives

See Appendix C for additional analysis



Distribution of WSCH, Fall 2014*



*excluding in-service



All Courses, Fall 2014

Divisions	Count of Courses	% of Courses
Allied Health	48	27.0%
Business	11	6.2%
History, Social & Behavioral Sciences	35	19.7%
Language Arts & Communication Studies	31	17.4%
Math & Science	19	10.7%
Non-Credit	8	4.5%
Vocational Education	26	14.6%
<i>Total Distinct Courses</i>	<i>178</i>	

26 courses out of 178 account for 50% of all enrollments

2 disciplines dominate the top 50% of enrollments- FST and ABE



Scheduling Patterns & Rhythm, Fall 2014

Period #	Period Times	Nbr. Sects.	%
	starts before <9:30 AM	7	8.1%
1	9:30 AM	8	9.3%
	starts between 9:35 and 11:59 AM	6	7.0%
2	12:00 PM	13	15.1%
	starts between 12:30 and 4:00 PM	18	20.9%
3	5:20 PM	25	29.1%
	starts between 5:30 and 6:50 pm	9	10.5%
	Totals	86	
	Percent starting at a primary period		53.5%
	<i>Percent starting at a secondary period</i>		<i>46.5%</i>



Scheduling Patterns & Rhythm, Fall 2014

One Day A Week Classes Starting Time	Number of Classes				
	M	T	W	Th	F
8:00 AM			1	1	1
9:00 AM				1	
10:00 AM			1	1	
11:30 AM				1	
12:00 PM	1	1	1		
1:00 PM	1		1	1	
2:00 PM	1		1		
3:00 PM	1				
5:20 PM	5	4	7	5	
5:30 PM	1				
6:50 PM	1	1			
Totals	11	6	12	10	1



Calendars, Instructional Periods & College Income

- 3-Hour/Week Class, Face-to-Face

Current Calendar							
Days	Start	End	WCH	Enrl	WSCH	FTES	Income
M & W	8:00	9:15	3.0	20	60	2.00	\$9,274
16-Week Compressed Calendar							
Days	Start	End	WCH	Enrl	WSCH	FTES	Income
M & W	8:00	9:25	3.4	20	67.5	2.25	\$10,433
Differences							
Days	Start	End	WCH	Enrl	WSCH	FTES	Income
none	none	10 min.	.4 WCH	none	7.5 WSCH	.25 FTES	\$1,159



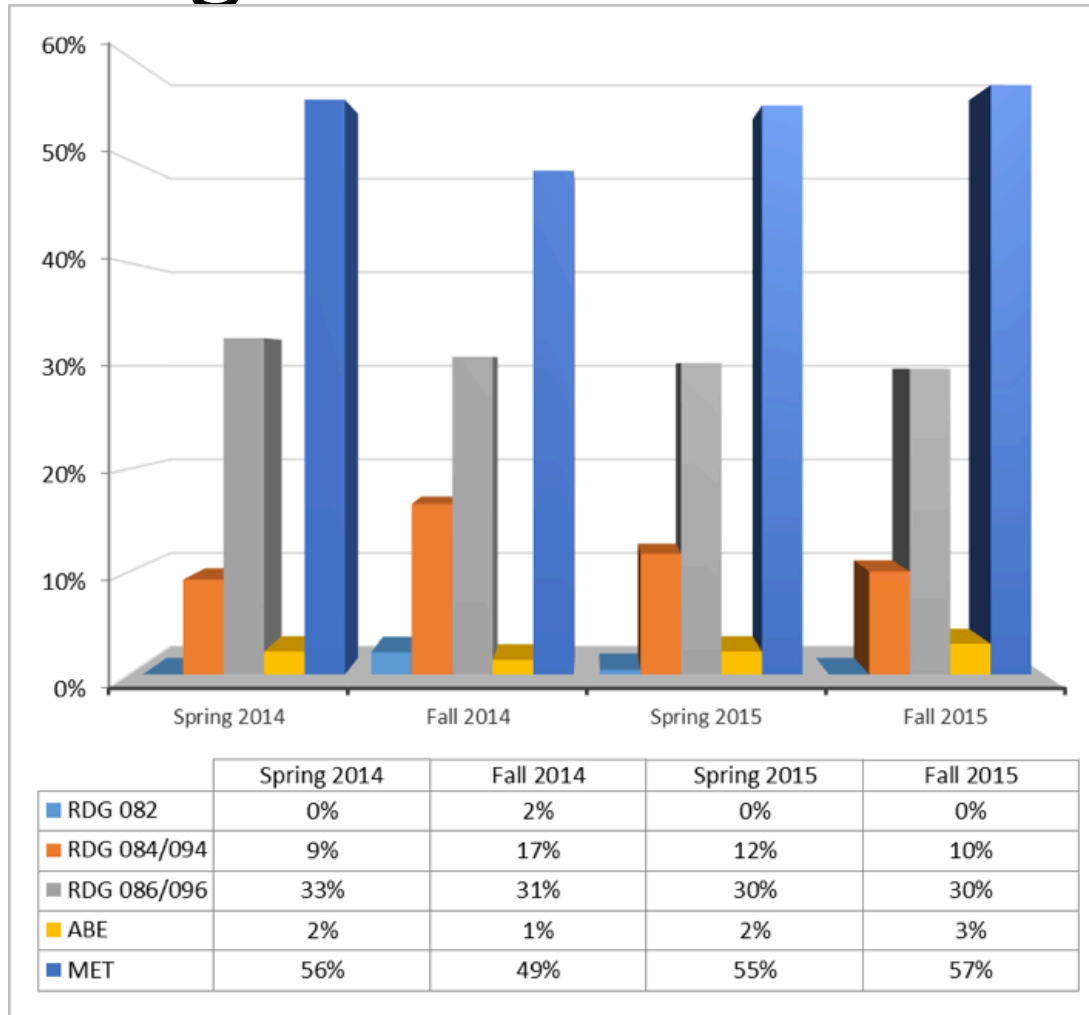
Student Attributes, Fall 2014

- Transfer & Update Job Skills (top goals)
- 58% female, 42% male*
- 53% traditional college age*
- 60% Hispanic*
- 25% =>12 units, 55% <12 units*
- 64% day, 13% evening (2009-14 average)
 - 12% evening decrease, 3% day increase, 9% TBA increase

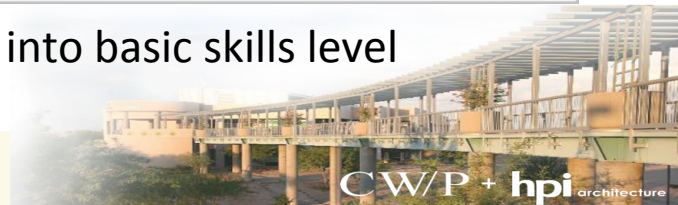
*excluding inmates & fire technology students



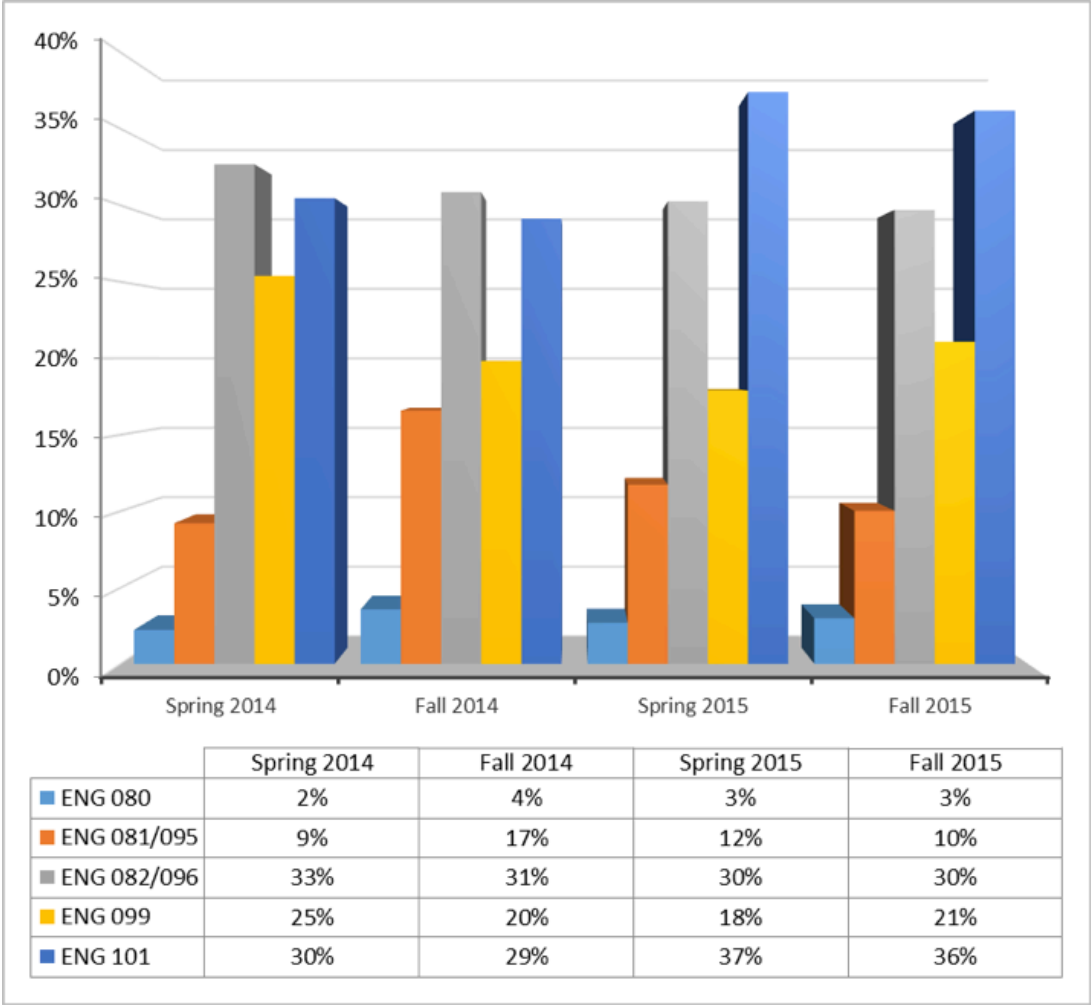
Reading Placements 2014-15



3,072 student exams; on average 46% placed into basic skills level



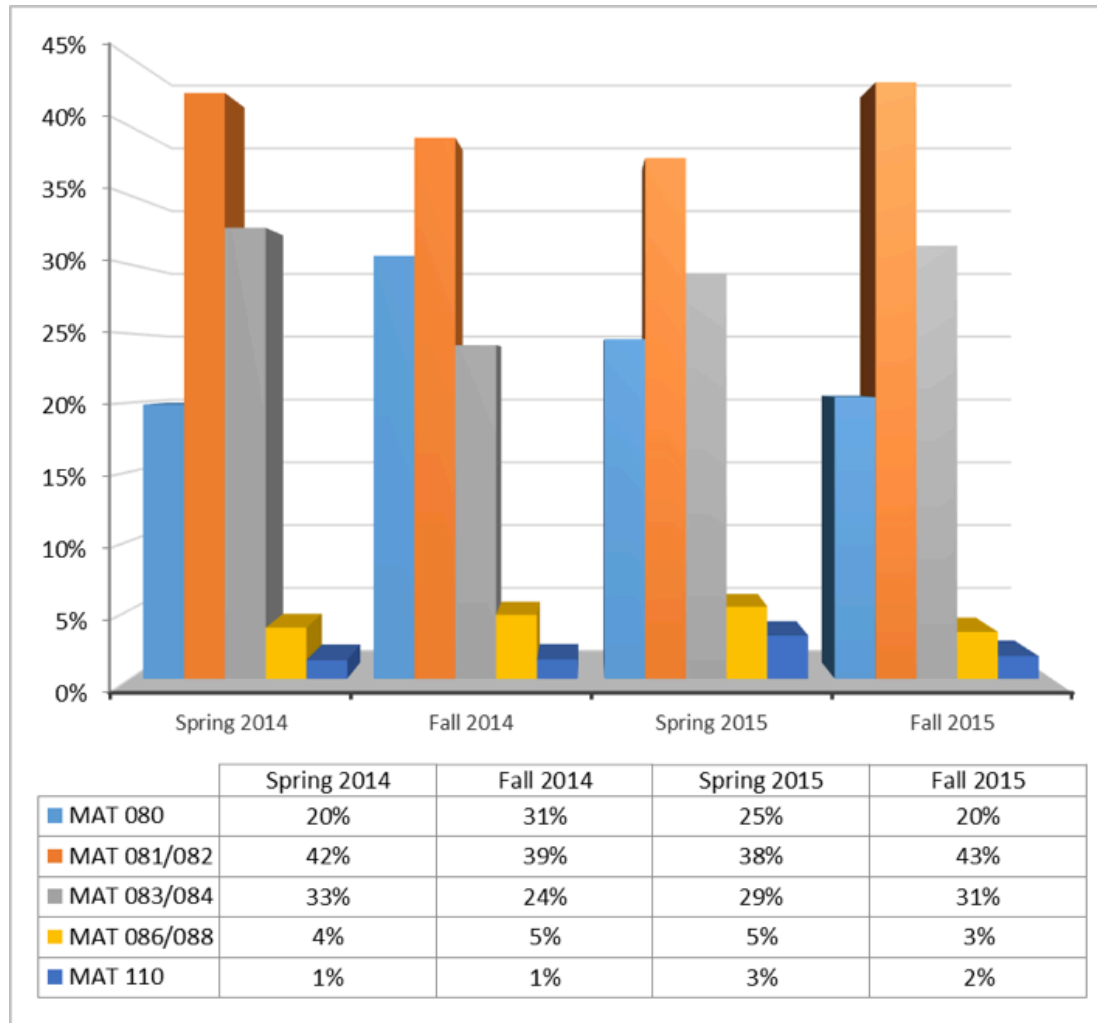
Composition Placements 2014-15



3,072 student exams; on average 66% placed into basic skills



Math Placements 2014-15



2,936 student exams; **on average 94% placed into basic skills**



Give Your Math Faculty A Hug



Because they draw the largest number of basic skills curriculum recommendations.



Coming Attractions

- March 3rd
 - EMP, Opportunities for the Future
 - FMP, SWOT Analysis & Preliminary Recommendations
- March 17th conference call
- March 24th all staff meeting
 - EMP & FMP summary highlights



Educational Master Plan

Planning Assumptions
February 25, 2016



Planning Assumptions List

- Questions or clarifications on list items?
- Additional topics/themes to add to the list?
- Sense of priorities among the list items?

What have goals got to do with all this?



Possible Goals Framework

- Process & outputs
 - Completion of programs of study
 - Learning outcomes from the programs of study
 - Equity in achievement among student subgroups
- Impact outcomes
 - Transfer of students to four-year institutions
 - Jobs students secure and retain upon completion of programs of study
- Survival issue (fiscal prudence)

